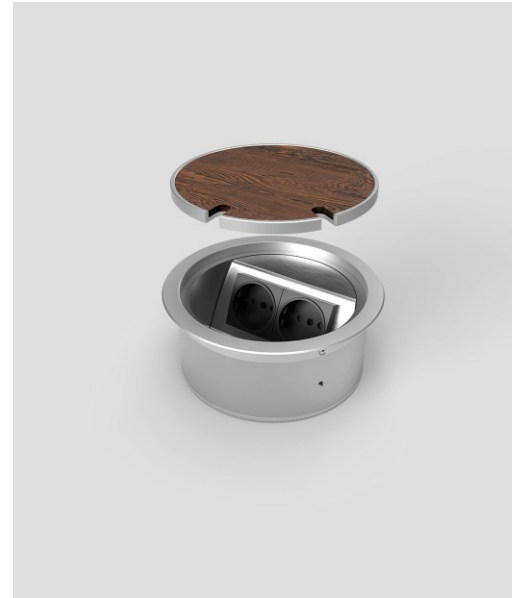


Floor sockets: 9902A-1-3

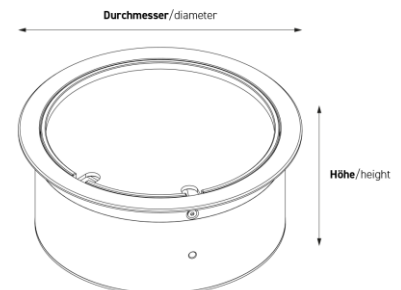
Specification:

Item No:	9902A-1-3
Product line:	Floor sockets
Units:	2
Mounting (qty):	2 x Schuko
Construction:	Round
Ground:	<ul style="list-style-type: none"> • Suitable for screed • Suitable for hollow floor
Type of inst.:	Flush mounted
Lid character.:	<ul style="list-style-type: none"> • Closable with plugged in plugs • Own floor covering applicable • Removable • With cable outlet
Environment:	Indoor – dry to moist
EAN:	4058796001301



Technical data:

Floor cover. rec.:	5 mm
Protection class:	IP 20 (in unused condition) IP 20 (in used condition)
Material:	<ul style="list-style-type: none"> • Frame made of solid aluminum • Housing made of stainless steel (1.4301) • Lid made of solid aluminum • Equipment carrier made of aluminum
Colour:	Aluminum (nature)
Surface:	Anodised
Weight:	1,10 kg
Dimensions:	Ø: 170 mm height: 72 mm
Floor inst. depth:	70 mm
Supply line:	2 x back; 2 x bottom; each Ø 25 mm
Load:	200 kg



Features:

Opt. Accessory:	Item No. 12118 - Placeholder for 9902; stainless steel
Features:	Complete and pre-assembled