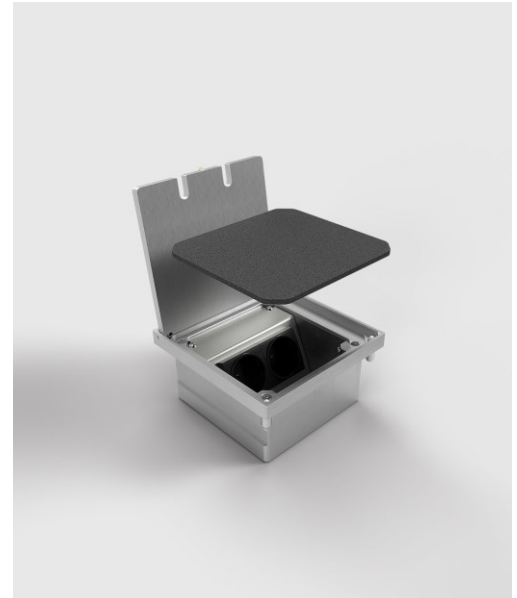


## Floor sockets: 8302A-1-3

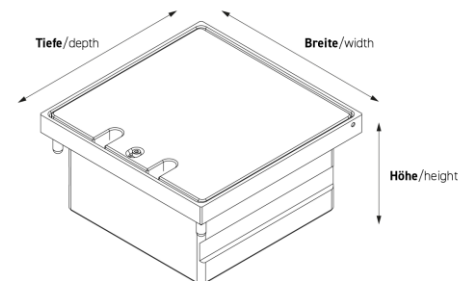
### Specification:

<b>Item No:</b>	8302A-1-3
<b>Product line:</b>	Floor sockets
<b>Units:</b>	2
<b>Mounting (qty):</b>	2 x Schuko
<b>Construction:</b>	Square
<b>Ground:</b>	Suitable for screed
<b>Type of inst.:</b>	Flush mounted
<b>Lid character.:</b>	<ul style="list-style-type: none"> <li>• Closable with plugged in plugs</li> <li>• Hinged</li> <li>• Toolless lockable</li> <li>• With cable outlet</li> </ul>
<b>Environment:</b>	Indoor – wet sweepers
<b>EAN:</b>	4058796000465



### Technical data:

<b>Protection class:</b>	IP 64 (in unused condition) IP 20 (in used condition)
<b>Material:</b>	<ul style="list-style-type: none"> <li>• Frame made of solid aluminum</li> <li>• Housing made of solid aluminum</li> <li>• Lid made of solid aluminum</li> <li>• Equipment carrier made of aluminum</li> </ul>
<b>Colour:</b>	Aluminum (nature)
<b>Surface:</b>	Anodised
<b>Weight:</b>	1,40 kg
<b>Dimensions:</b>	width: 150 mm height: 77 mm depth: 150 mm
<b>Floor inst. depth:</b>	77 mm
<b>Supply line:</b>	2 x back; each Ø 25 mm
<b>Load:</b>	900 kg



### Features:

<b>Opt. Accessory:</b>	Item No. 12184 - Placeholder for 3301, 3302, 8302, 8310, 8701, 8702, 8802; EPS
<b>Features:</b>	<ul style="list-style-type: none"> <li>• All assemblies with VDE certification</li> <li>• Complete and pre-assembled</li> </ul>